



Chelsea Creek Tower

Park Street, London, SW6 2RQ

Asking Price £1,852,000

This is wonderfully bright and spacious two double bedroom apartment located on the second floor with a large private terrace. The Tower is situated within the landscaped gardens of Chelsea Creek, one of London's latest riverside development's. The property comprises of:- Entrance Hallway, large open plan reception room leading out onto a private terrace, sleek fitted kitchen, two excellent sized double bedrooms, each with fitted wardrobes, master has an en-suite bathroom, second family bathroom.

The property also comes with secured parking space. The property also benefits from having 24 hour concierge, gym facilities, close proximity to Imperial Wharf station which is less than 5 minutes walk.

Service charge: £11,000 per annum (approx)

Ground rent: £900 per annum (approx)

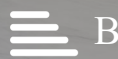
Lease length: 986

The above figures should be verified for exact amounts with management

- Two Double Bedroom
- Two Bathrooms
- Second Floor
- Recently Built
- Close to Imperial Wharf Station
- Private Terrace
- Allocated Parking Space

Viewing

Please contact our Messila Residential Office on 020 7586 6699 if you wish to arrange a viewing appointment for this property or require further information.



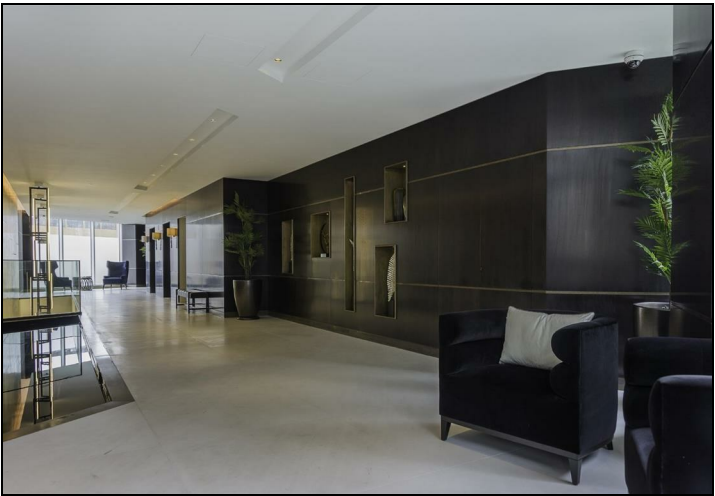
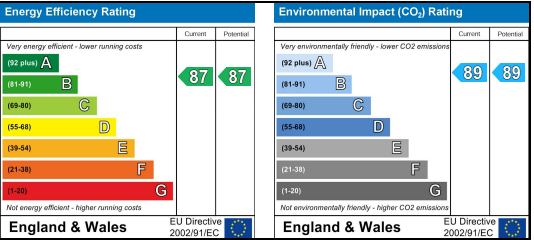
Floor Plan



Area Map



Energy Efficiency Graph



These particulars, whilst believed to be accurate are set out as a general outline only for guidance and do not constitute any part of an offer or contract. Intending purchasers should not rely on them as statements of representation of fact, but must satisfy themselves by inspection or otherwise as to their accuracy. No person in this firms employment has the authority to make or give any representation or warranty in respect of the property.